



INVEST IN THE FUTURE

AUTOMATION



MIG-MAG/GMAW-FCAW
TIG/GTAW

2026 A

A solid manufacturing group

900 people

C1+
Credit Rating
Banque de France

€ 145 000 000

55 000 m²
2 factories



FRENCH MANUFACTURER
SINCE 1964

A family company



Nicolas & Bruno
Bouygues



Global coverage

125 countries

5 catalogues

3 500+ references



- MMA/SMAW
- TIG/GTAW
- MIG-MAG/GMAW-FCAW
- Plasma cutting
- Stud welding
- Spot welding
- Accessories
- Protection
- Consumables



- Spot welding
- Dent pulling
- MIG-MAG/GMAW-FCAW
- Plasma cutting
- Induction heating
- Riveting
- Lifting
- Bodyshop tools



- Chargers
- Battery support units
- Boosters
- Starters
- Testers
- Portable energy
- Jumper cables
- EV charging
- Accessories



- Releasing
- Straightening
- Shrink-fitting
- Bending
- Brazing
- Quenching
- Annealing



- MIG-MAG/GMAW-FCAW
- TIG/GTAW



GYS FRANCE - HEADQUARTERS
Laval

GYS LOGISTIC CENTER
Laval



GYS GERMANY
Aachen



GYS U.K.
Rugby



GYS CHINA
Shanghai



GYS ITALIA
Venezia



GYS IBERICA
Madrid

Table of contents

TECHNOLOGY 6 > 11

SMART AUTOMATION MODULE 7

MIG-MAG/GMAW-FCAW 12 > 19

TIG/GTAW 22 > 27



AUTOMATION TECHNOLOGY

TECHNOLOGIES
D'AUTOMATISATION

Robot

	Controller	SAM-1N - Digital	
		Protocol	MIG / TIG AC / TIG DC
ABB	Omnicores	EtherNet/IP - ProfiNet	✓
	IRC5 single / IRC5 Compact / IRC5 Panel Mounted	EtherNet/IP - ProfiNet - DeviceNet	✓
FANUC	R30iB +/- R30iB + mini / R30iB + mate	EtherNet/IP - DeviceNet	✓
HYUNDAI	Hi5a-S20	DeviceNet	✓
KAWASAKI	E controller	EtherNet/IP	✓
KUKA	KRC5	EtherNet/IP - EtherCAT - ProfiNet	✓
	KRC4/KRC4 Compact	EtherCAT - ProfiNet - EtherNet/IP	✓
STÄUBLI	CS9	EtherCAT - Modbus TCP - EtherNet/IP	✓
YASKAWA	YRC1000	EtherNet/IP - ProfiNet - DeviceNet	✓
	DX200	EtherNet/IP - DeviceNet	✓
	DX100	EtherNet/IP - DeviceNet	✓

Cobot

	Controller	Digital / Analogue	SAM-1N - Digital	
		SAM-1A	Protocol	MIG / TIG AC / TIG DC
ABB	Omnicores	✓	EtherNet/IP - ProfiNet	✓
DOBOT	CR Serie	✓	Modbus TCP	✓
DOOSAN	M_Serie / H_Serie / A_Serie	✓	Modbus TCP	✓
FANUC	R30iB Mini Plus	✓	EtherNet/IP - DeviceNet	✓
HANWHA	HCR	-	Modbus TCP	✓
JAKA	ZU/ZU_*s/ZU_Ai	-	Modbus TCP	✓
KASSOW ROBOTS	KR Serie	✓	Modbus TCP	✓
OMRON	TM	-	Modbus TCP	✓
TECHMAN ROBOT	TM	-	Modbus TCP	✓
UNIVERSAL ROBOTS	E serie / CB3	✓	Modbus TCP	✓
YASKAWA	YRC1000	✓	EtherNet/IP - DeviceNet - ProfiNet	✓

PLC Programmable Logic Controller

BECKHOFF	DELTA	OMRON	Protocol EtherNet / IP - ProfiNet - Modbus TCP - EtherCAT - DeviceNet
PRO-FACE	ROCKWELL AUTOMATION	SCHNEIDER ELECTRIC	
SIEMENS	UNITRONICS	WAGO	

Compatible applications/software - Applications & logiciels compatibles

GYS develops high-performance front-end interfaces that are compatible with the leading robotic programming environments on the market, ensuring seamless integration and streamlined implementation.

GYS développe des interfaces front-end performantes et compatibles avec les principaux environnements de programmation robotique du marché, garantissant une intégration fluide et une mise en service optimisée.



NUMERICAL SAM 1N

POWER SOURCE CONNECTIVITY KITS → **SMART AUTOMATION MODULE SAM 1N 064935** → **ANYBUS CONNECTORS**

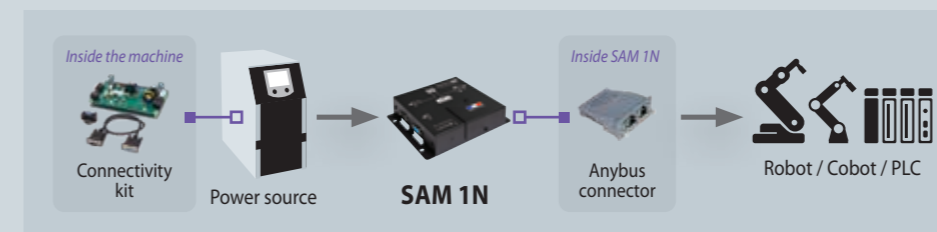
KIT NUM TIG/GTAW 1
for KRYPTON 401 DC
TITANIUM 230 AC/DC FV, 321 AC/DC, 400 AC/DC
037960

KIT NUM MIG/GMAW 1
for NEOPULSE 400 CW, 400G, 500G
062993

15 cm x 18 cm

- 90% PLC/ROBOT COMPATIBILITY
- 5 COMMUNICATION PROTOCOLS
- AUTOMATIC DETECTION

	I (100%)	SAM 1N (Numerical)
MIG	NEOPULSE 400 CW	360 A ✓
	NEOPULSE 400 G	360 A ✓
	NEOPULSE 500 G	440 A ✓
TIG	KRYPTON 401 DC	320 A ✓
	TITANIUM 230 AC/DC FV	170 A ✓
	TITANIUM 321 AC/DC	310 A ✓
	TITANIUM 400 AC/DC	360 A ✓



DIGITAL ANALOGIC SAM 1A

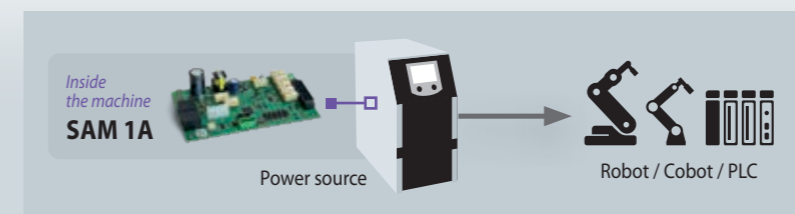
SMART AUTOMATION MODULE SAM 1A 071940

Included:

- Connectivity kit
- Power source
- Anybus connector

Integrated SAFETY function

2 modes: 20 Job, Manual



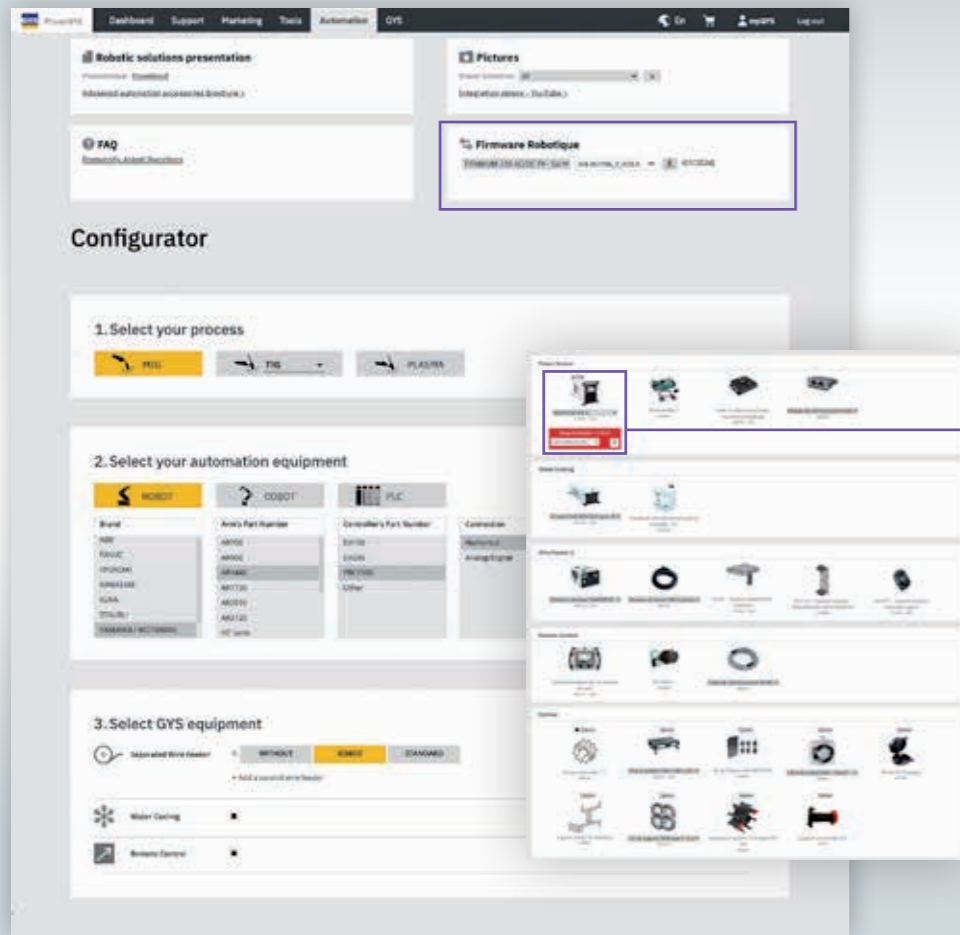
	I (100%)	SAM 1A (Digital / Analogue)
MIG	NEOPULSE 400 CW	360 A ✓
	NEOPULSE 400 G	360 A ✓
	NEOPULSE 500 G	440 A ✓
TIG	KRYPTON 401 DC	320 A ✓
	TITANIUM 230 AC/DC FV	170 A -
	TITANIUM 321 AC/DC	310 A ✓
	TITANIUM 400 AC/DC	360 A ✓



Build your own solution in an operating environment compatible with GYS equipment.
 Construisez votre solution dans un environnement d'équipements compatibles GYS.



Power sources, firmware, wire feeders, cooling units, accessories, consumables.
 Générateurs, firmwares, dévidoirs, groupes froids, accessoires, consommables.



Automation firmware

Firmware d'automatisation



NEOPULSE 500 G
014503 (3D)

Required Update (12/2025)

Ind 014503_R_V25.C

Available exclusively on the GYS configurator.

Disponibles uniquement sur le configurateur GYS.

Installation files downloadable in one click

Fichiers d'installation téléchargeables en 1 clic

Configuration

Summary of the requested configuration in Excel format, including the GYS equipment required for automation.

Récapitulatif de la configuration souhaitée au format Excel avec les équipements GYS nécessaires à l'automatisation.

Back-End

Package including all installation files: 3D models (.step), IP configuration, software, EDS files, GSD files, and data mapping files.

Dossier comprenant tous les fichiers d'installation : modèles 3D (.step), IP Config, logiciel, fichiers EDS, GSD, fichiers de mappage des données.

Front-End

URCap software, sample programs, tools

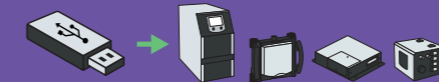
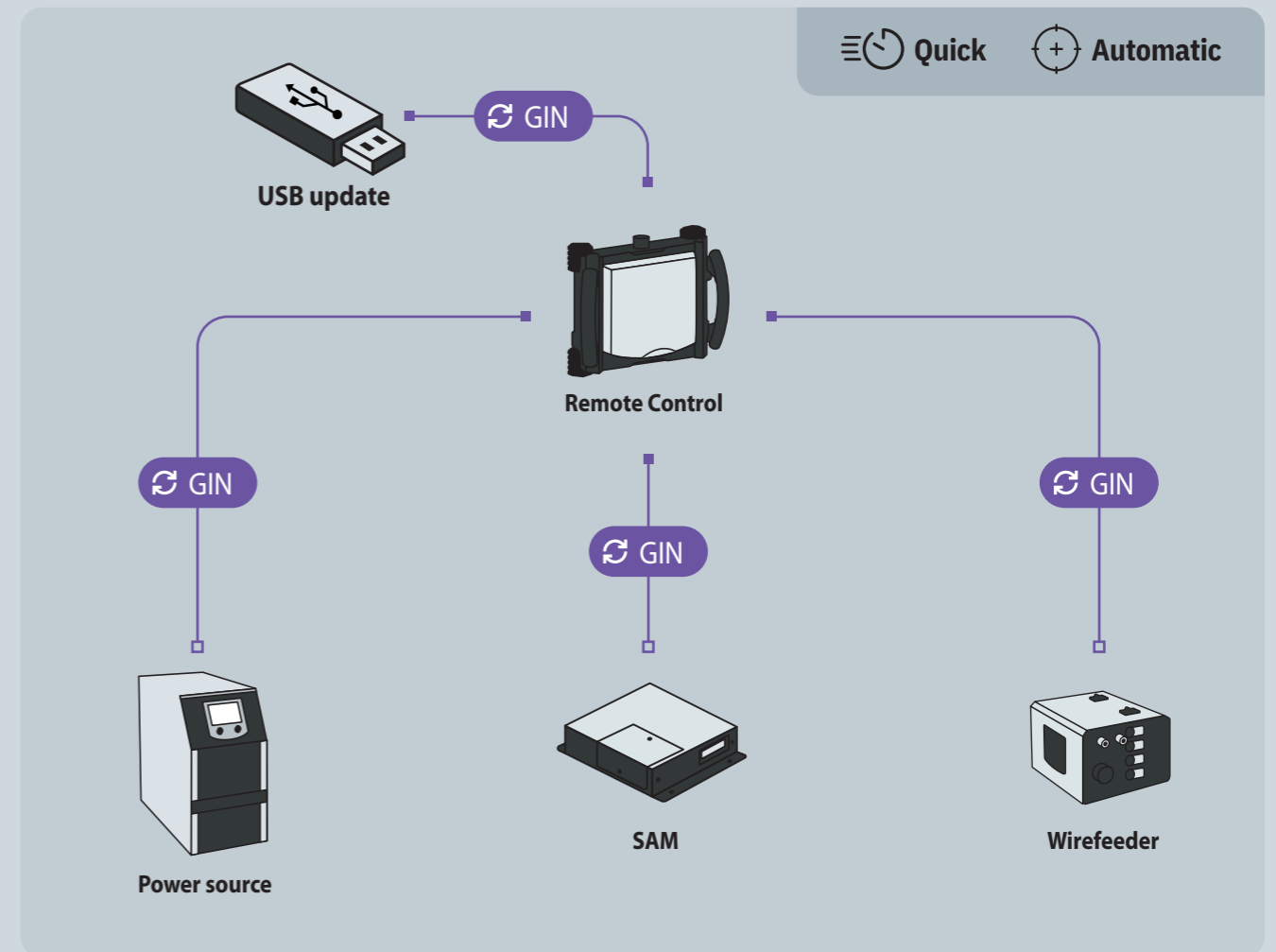
Logiciel URcap, programmes exemples, outils

GIN

Protocol

The proprietary communication protocol "GIN" ensures reliable data exchange between all connected devices.

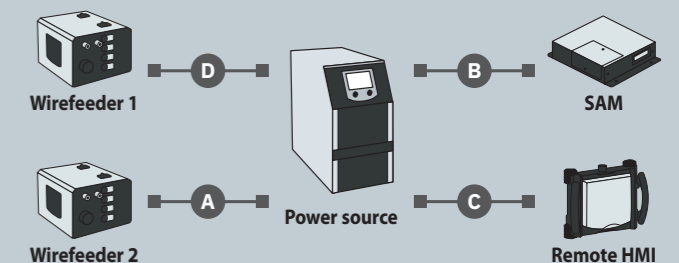
Le langage de communication propriétaire « GIN » assure la transmission des données entre tous les équipements connectés.



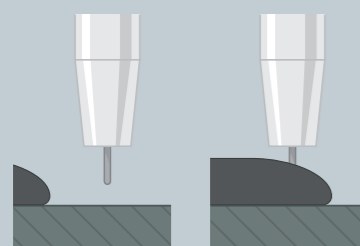
Only one update is required to update all connected devices. Quick configuration and automatic recognition of GYS equipment.

Une seule mise à jour suffit pour mettre à jour l'ensemble des produits connectés. Configuration rapide et reconnaissance automatique des équipements GYS.

Cable length - Longueur de câbles



A + C < 40 m	D + B < 40 m
A + B < 40 m	B + C < 70 m
D + C < 40 m	D + A < 70 m

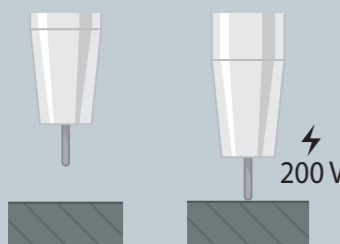


○ Wire stick OFF ● Wire stick ON

1. Wire stick

Wire stick signals to the robot control system that there is contact between the workpiece and wire at the end of the bead.

Le *wire stick* informe le contrôleur du robot d'un contact entre la pièce et le fil à la fin du cordon de soudure.

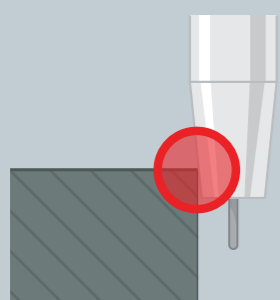


○ Touch Sense ● Touch Sense

2. Postion search

Enables workpiece detection via low-current pulses through the electrode/wire. When contact is established, *Touch_Sense* switches to 1, allowing trajectory adaptation from the controller (relocalization, path correction, presence check, etc.).

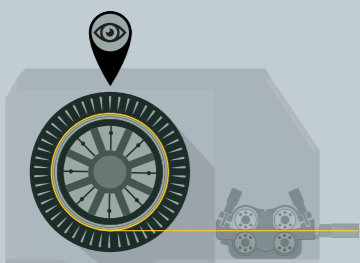
Permet la détection de pièce par impulsions à faible courant via l'électrode/le fil. Au contact, *Touch_Sense* passe à 1, autorisant l'adaptation de trajectoire depuis le contrôleur (relocalisation, correction, contrôle de présence, etc.).



3. Collision

In the event of a collision, a signal is transmitted through the torch to automatically stop further movement by the controller. This helps to prevent damage to equipment.

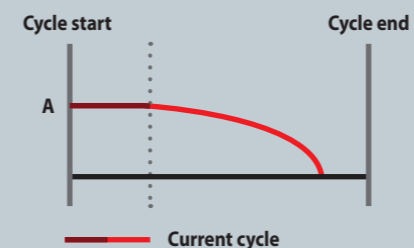
Lors d'une collision, l'information est transmise par la torche pour permettre un arrêt programmé du mouvement depuis le contrôleur. Cela évite les dommages matériels.



4. Wire end (MIG)

Integrated connector for installing an end-of-filler-wire spool detection sensor. Enables the welding cycle to be stopped via the controller.

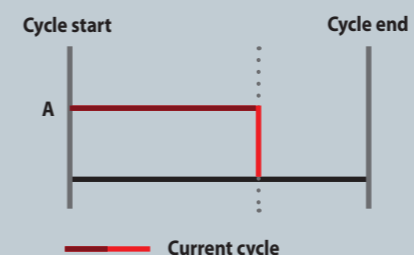
Prise intégrée pour l'installation d'un capteur de détection de fin de bobine de métal d'apport. Permet de programmer un arrêt du cycle de soudure depuis le contrôleur.



5. Quick stop

Quick Stop allows for rapid interruption of the welding process, while still maintaining the quality of the weld bead.

Le *Quick Stop* permet une interruption rapide du processus de soudage tout en préservant la qualité du cordon de soudure.



6. Safety stop

The *Safety stop* triggers an emergency stop of the welding process to ensure the safety of equipment and people in the surrounding area. Stopping this way may result in damage to the workpiece being welded.

Le *Safety stop* provoque un arrêt d'urgence du processus de soudage pour garantir la sécurité des équipements et des personnes dans le périmètre. Cet arrêt peut entraîner des dommages sur la pièce en cours de soudage.



7. HF Adjustment (TIG)

Adjusting the intensity and duration of the HF helps to reduce spatter and prevent damage to surrounding equipment.

Ajuster l'intensité et la durée HF, permet de réduire les projections et d'éviter d'endommager les équipements environnants.



8. JOB

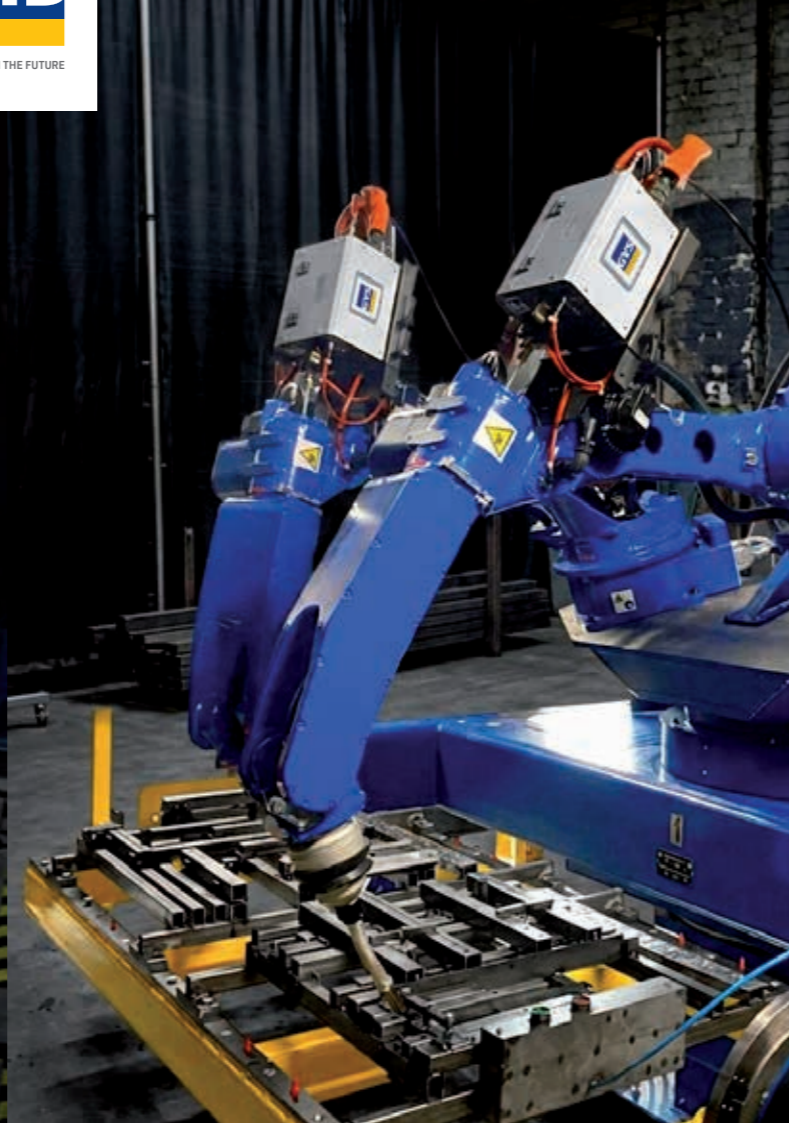
JOB mode allows custom welding parameter settings to be recalled directly from the power source. For TIG processes only, it is possible to switch to *JOB* during the welding cycle.

Le mode *JOB* permet d'appeler des paramétrages de soudage personnalisés dans le générateur. En TIG uniquement le changement de *JOB* pendant le cycle de soudage est possible.



MIG-MAG

GMAW- FCAW



Welding processes - PROCÉDÉS DE SOUDAGE

STANDARD DYNAMIC

Versatile / High speed
Polyvalent / Haute vitesse

- Controlled short-circuit
- Reduced globular phase
- Low spatter
- Excellent arc stability
- In all positions
- Court-circuit contrôlé
- Réduction de la phase globulaire
- Limite les projections
- Excellente stabilité d'arc
- Dans toutes les positions

STANDARD IMPACT

Penetration / High speed
Pénétration / Haute vitesse

- Ideal for carbon steel
- High productivity
- Excellent arc stability
- Low spatter, high deposition rate
- Multi-pass welding
- Wide, fluid weld pool
- Idéal acier carbone
- Haute productivité
- Excellente stabilité d'arc
- Limite de projections, fort taux de dépôt
- Soudage multipasses
- Bain de soudage large et fluide

MANUAL

Simple / Efficient / Versatile
Simple / Efficace / Polyvalent

- Adjustable voltage/wire speed
- Ideal for welding carbon steel
- Réglage de la tension / vitesse fil
- Idéal soudage acier carbone

PULSE

Finish quality / High speed
Qualité de finition / Haute vitesse

- High-quality welds
- Low, localized heat input
- Reduced deformation
- No craters, no cold welds
- Excellent arc stability
- Qualité de joints
- Apport de chaleur faible et ciblé
- Moins de distorsion
- Sans cratère, pas de soudure froide
- Excellente stabilité d'arc

COLD PULSE

For automotive manufacturers
Pour les constructeurs automobiles

- Ideal for thin workpieces
- In all positions
- For brazing galvanised sheets
- Reduced workpiece deformation
- Complies with manufacturer approvals
- Idéal pour les tôles fines
- Dans toutes les positions
- Pour brasage de tôles galvanisées
- Déformation de la tôle réduite
- Respect des homologations constructeurs

STANDARD ROOT

Root pass / Pipeline welding
Passage de racines / Soudage de pipelines

- Penetration control
- In all positions
- Open-root pass without backing
- Wide bead, flat root, excellent fusion
- Contrôle de pénétration
- Dans toutes les positions
- Passe de racine sans support
- Cordon large, racine plate, excellente fusion

MODULARC

Finish quality / All-position
Qualité de finition / Toutes positions

- Perfect aesthetic finish
- Heat input control
- High productivity on aluminium
- Esthétique irréprochable
- Contrôle d'apport de chaleur
- Productivité important sur l'aluminium

	Operating range Plage d'utilisation (mm)
Standard dynamic	0.8 + 30 +
Standard impact	1.5 + 30 +
Manuel	1 + 30
Pulse	0.8 + 30 +
Cold pulse	0.5 + 3
Standard root	0.5 + 5
Modularc	0.8 + 30 +



MIG/MAG

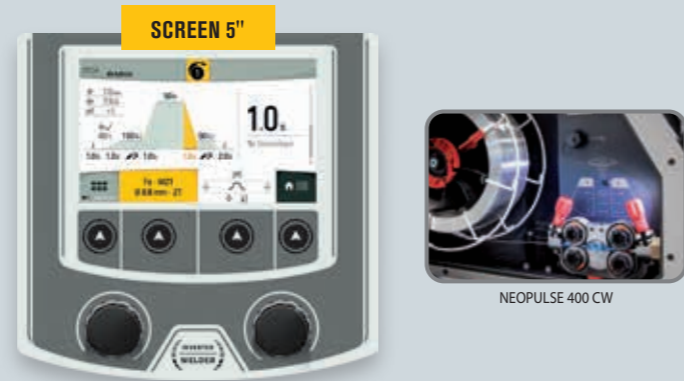
NEOPULSE

INVERTER • PULSE



Youtube

COBOT

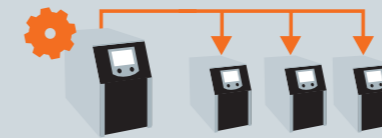


SCREEN 5"

NEOPULSE 400 CW

PORTABILITY

Share configuration & jobs



5 m
400V

70/95 mm²
Ø 13 mm



Cooling unit INCLUDED
1000 W, 5.5 L
liquid not included



5 m
400V

70/95 mm²
Ø 13 mm

OPTION
Pallet trolley
064621



OPTIONS

Cooling unit Neocool
1000 W, 5.5 L
liquid not included
032750

ROBOT



OPTIONS

COBOT MIG torch grip
- Torche MIG pour COBOT
350 A, 4 m, air
063792
500 A, 4 m, liquid
081147



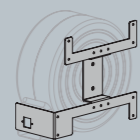
Robotic wire box
- Boitier fil robotique
Ø300 mm
079793



COBOT torch support
- Support de torche COBOT
087644



Robotic wire box holder
- Support boitier fil robotique
079809



Filter kit
063143



USB key
16 Go/GB
062344



400 V • 3 ~



NEOPULSE 400 CW

400 A @ 60%

AIR LIQUID WF AD IP 23

no accessories/no trolley
062061

400 V • 3 ~ • POWER SOURCE



NEOPULSE 400 G

400 A @ 60%

no accessories/no trolley
014497

IP 23

NEOPULSE 500 G

500 A @ 50%

no accessories/no trolley
014503

CE NORM. EN60974-1 EN60974-5 EN60974-10	MADE IN FRANCE	50 / 60 Hz	A	min → max	MIG EN60974-1 (40°C)			U _o	Electronic Control	m/min	Ømm	Flux Cored Wire (Gas / No Gas)		Original equipment Equipement d'origine		L × W × H cm / kg	
					I (60%)	X% (I2 max)	100%					200 mm 5 kg	300 mm 15 kg	TYPE			
NEOPULSE 400 CW		400 V • 3 ~	32	10 → 400	400 A	60%	360 A	85 V	■	22	0.6 → 1.6	0.9 → 2.4	■	■	acier-steel 1/1.2 mm	F (061873)	92 × 36 × 86 / 81
NEOPULSE 400 G		400 V • 3 ~	32	10 → 400	400 A	60%	360 A	85 V									80 × 39 × 50 / 33.1
NEOPULSE 500 G		400 V • 3 ~	32	10 → 500	470 A	50%	440 A	85 V									81 × 39 × 50 / 34.2



WIRE FEEDERS

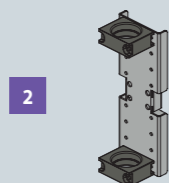
				Ref.
Cable lug - Cosse	95 mm ²	M10	x1	55035



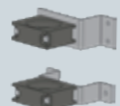
Kit n°20
Cable guide
075429



Kit n°21
Cable fixation
077324



Kit n°23
Interconnection mount
YASKAWA - AR1440 : 1730 / 2010
079458



Kit n°24
Interconnection mount
YASKAWA - AR3120
088672



Complete connection cable SMARTFEED

Liquid, 4 m, Ø95 mm ²	073517
Liquid, 8 m, Ø95 mm ²	069725
Liquid, 12 m, Ø95 mm ²	078581
Liquid, 16 m, Ø95 mm ²	085619

Command cable

Control cable, 4 m	073524
Control cable, 8 m	073531

Smartfeed support for ROBOT kits

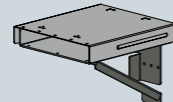
- Kits de fixation pour dévidoir robotique SMARTFEED



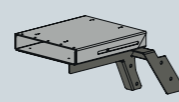
Complete list of support



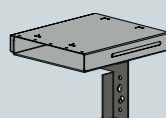
Kit n°1 - YASKAWA
070707



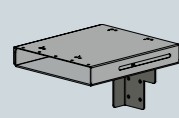
Kit n°2 - KAWASAKI
071445



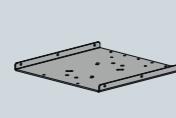
Kit n°3 - ABB IRB 1660ID
071452



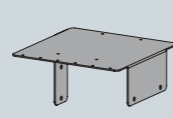
Kit n°4 - FANUC
071469



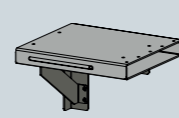
Kit n°5 - KUKA
071476



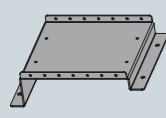
Kit n°6 - Multibrand
072282



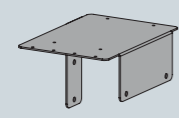
Kit n°7 - ABB IRB 4600
072602



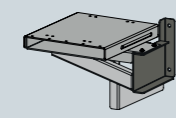
Kit n°8 - ABB IRB 1520ID
075399



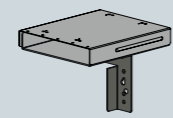
Kit n°9 - ABB IRB 6600
075931



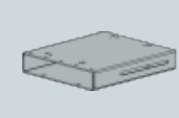
Kit n°10 - ABB IRB 2600
078772



Kit n°11 - ABB IRB 2600ID
078789



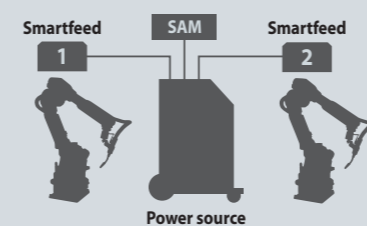
Kit n°12 - AR3120
086968



Kit n°13 - KUKA KR 20 R3100
088313

ASK US FOR MORE

All configurations online



DOUBLE WIRE FEEDER / DOUBLE DÉVIDOIR

The settings on the two wire feeders may be different. Only one variable is used to switch from one wire feeder to the other (N°_Wirefeed = 1 or 2).

Les réglages sur les deux dévidoirs peuvent être différents. 1 seule variable pour passer d'un dévidoir à l'autre (N°_Wirefeed = 1 ou 2).

for Neopulse 400 CW - Kit NUM-1 necessary (063938)
for Neopulse 400G / 500G - Kit NUM-2 necessary (064942)



Back view
M-4 / MB-PP



PUSH-PULL BRUSHLESS MOTOR

- ✓ Heavy duty
- ✓ Precise
- ✓ Maintenance-free
- ✓ Higher efficiency
- ✓ Fits all torches without an interface box

SMARTFEED MB-PP

073647

IP 21 BRUSHLESS MOTOR 100 W L24.5 x W21.5 x H15 cm

connection cable for the generator not included



SMARTFEED M-4

066618

IP 21 MOTOR DC 115 W L24.5 x W21.5 x H15 cm

connection cable for the generator not included

	EN60974-1 (40°C)			Original equipment - Equipement d'origine		PUSH-PULL				
	IA 60%	X% I2 max						MIG/MAG (Gas)	Flux Cored Wire (Gas / No Gas)	
SMARTFEED M-4	500	60	115 W	1.0/1.2 mm	F-061873	1+25	—	0.6 → 1.6	0.9 → 2.4	40 × 31 × 25 / 5.7
SMARTFEED MB-PP	500	60	110 W	1.0/1.2 mm	F-061873	1+25	■	0.6 → 1.6	0.9 → 2.4	40 × 31 × 25 / 5.7

COMPATIBILITY

MIG	NEOPULSE 400 CW	3*
	NEOPULSE 400G	1 2 3*
	NEOPULSE 500G	1 2 3*

4* : + Kit NUM-1 necessary (063938)

TROLLEYS / CHARIOTS

IDEAL

COMBINAISON

1 PALLET TROLLEY 064621
 ↳ 79 x 49 x 27.5 cm / 22.8 kg ↳ 81 x 52 x 21 cm / 24.2 kg

COOLING UNITS / GROUPES FROIDS



2 NEOCOOL 032750

OPTIONS

Cooling liquid
 2L 082212
 5L 062511
 10L 052246

	Ø 10 (x1) 064331
	Ø 10 (x1) 064324
	Ø 6 (x1) 064348

			L					Noise reduce		
	50 / 60 Hz	1L/min W		Back	Thermal protection Protection thermique	Water flow sensor Capteur débit d'eau	Water level sensor Capteur niveau d'eau		L x W x H cm / kg	L x W x H cm / kg
NEOCOOL	400 V / 2~	1000	5.5	x1	■	■	■	■	80 x 36 x 35 / 20	72 x 30 x 24 / 17

REMOTE CONTROL / COMMANDE À DISTANCE



3 RC-HD2
 ↳ 1.8 kg ↳ 36 x 27 x 21 cm / 2.7 kg
062122

for
 ✓ Neopulse 400 CW
 ✓ Neopulse 400G
 ✓ Neopulse 500G



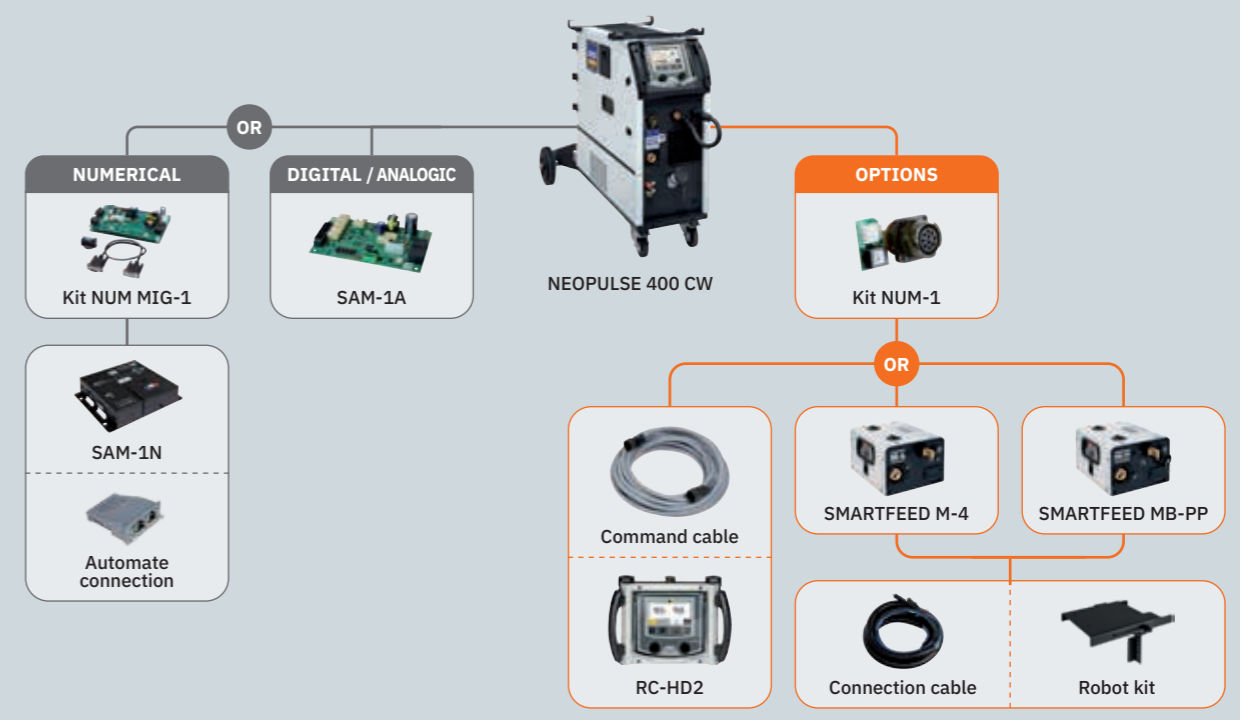
SOFTWARE UPDATE
 RC-HD2 cannot be used if the configuration uses a double wire feeder.

OPTIONS

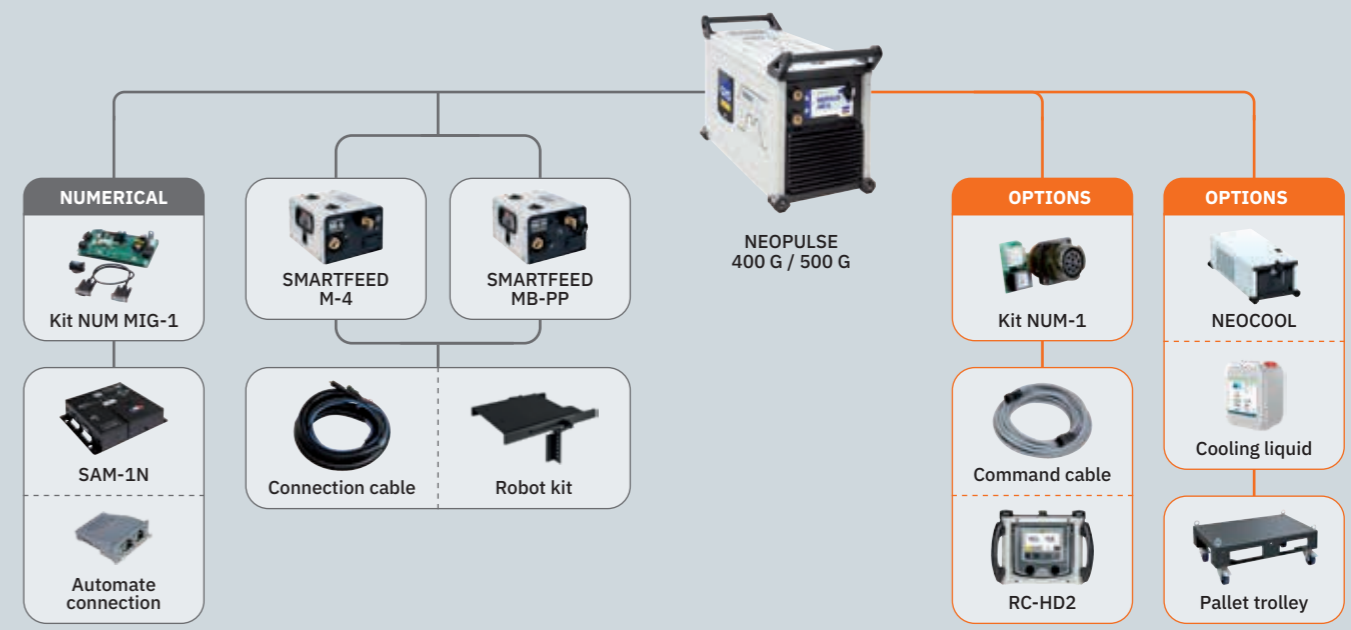
HD2 Command cable
 6 m 063914
 11 m 036925

Kit NUM-1
 063938

MAGNETFIX 50
 029637



Access all of our configurations online
 Accédez à toutes nos configurations en ligne



COMPLETE PACKS

pack NEOPULSE 400G ETHERNET IP 071575	•	•	•	•	•	•	•	•	•	•	•	•
pack NEOPULSE 500G ETHERNET IP 071582	•	•	•	•	•	•	•	•	•	•	•	•





TIG/GTAW

KRYPTON	21
TITANIUM	22



TIG

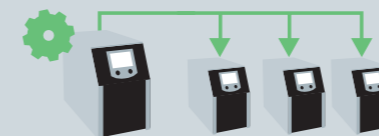
KRYPTON

TIG DC



PORTABILITY

Share configuration & jobs



VRD inside Voltage Reduction Device

Software & Hardware protection		
	U _o (EN60974-1)	U (Voltmeter)
VRD ON	26 V	29 V
VRD OFF	70 V	57 V
ON → OFF sensibility	< 200 Ω	
OFF → ON delay	< 0.3 s	



OPTIONS

Cooling unit Koolweld 3
1000 W, 5.5 L
liquid not included
083363

KRYPTON 401 DC

400 A

400 V • 3~



IP 23 AD SR VRD inside FAST PULSE 10 kHz AID

no accessories :
080904

CE NORM. EN60974-1	MADE IN FRANCE	50 / 60 Hz	A	I ₂ TIG	I ₂ MMA	INTEGRATED TECHNOLOGY							TIG			Protected & compatible power generator (+/-15%)	L x W x H cm / kg	L x W x H cm / kg	
						SR	VRD	AID	TIG PULSE	E WELD	WAVE FORMS	IP	I (60%)	X% (I ₂ max)	100%				U _o
KRYPTON 401 DC		400V 3~	32	3→400	5→400	■	■	■	0.1→10 000 Hz	■	■	23	360 A	45 %	320 A	64.5V	30 kW	81 x 39 x 59 / 39	75 x 30 x 53 / 36



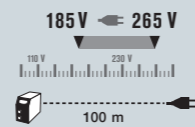
TIG

TITANIUM

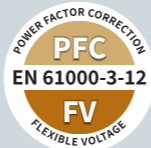
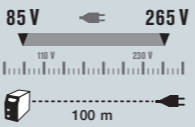
TIG AC/DC



PFC POWER FACTOR CORRECTION



FV FLEXIBLE VOLTAGE



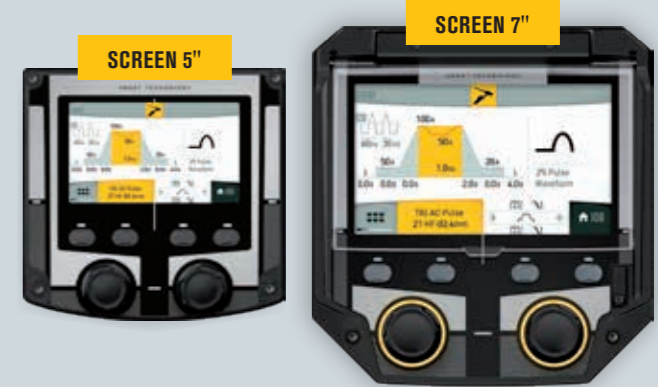
OPTIONS

Cooling unit Koolweld 1
1000 W, 3 L
liquid not included
070820



OPTIONS

Cooling unit Koolweld 3
1000 W, 5.5 L
liquid not included
083363

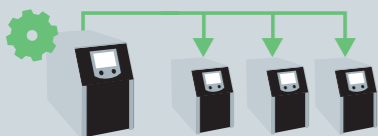


OPTIONS

Cooling unit WCU 1kW C
1000 W, 5.5 L
liquid not included
013537

PORTABILITY

Share configuration & jobs



TITANIUM 230 AC/DC FV

230 A	110-230 V • 1 ~	
230A	PFC FV SR VRD inside TIG PULSE	
35% TIG	FAST PULSE IP 23	

no accessories:
061996

TITANIUM 321 AC/DC

320 A	400 V • 3 ~	
320A	SR VRD inside IP 23	
80% TIG	TIG PULSE FAST PULSE	

no accessories:
069879

TITANIUM 400 AC/DC

400 A	400 V • 3 ~	
400A	SR IP 23	
60% TIG	TIG PULSE FAST PULSE	

no accessories:
013568

OPTIONS



Filter kit
063143



USB key 16 Go/GB
062344

CE NORM EN60974-1	MADE IN FRANCE	50/60 Hz	A	I ₂ TIG	I ₂ MMA	INTEGRATED TECHNOLOGY							EN60974-1(40°C) TIG			Freq. AC	U _o	mm ²	Protected & compatible power generator (+/-15%)	L x W x H cm / kg	L x W x H cm / kg
						SR	VRD	TIG PULSE	E WELD	WAVE FORMS	AD	IP23	I (60%)	X% (I2 max)	100%						
TITANIUM 230 AC/DC FV	110V 1~	32	140	5→140	■	■	0.1→20 000 Hz (DC) 0.1→500 Hz (AC)	■	■	■	■	■	140 A	100%	140 A	20→300	53	Ø13 35/50	8,5 KW	60 x 39 x 48 / 25.5	50 x 25 x 44 / 23.6
	230V 1~	16	5→230 (AC) 3→230 (DC)	5→230	■	■	■	■	■	■	■	190 A	35%	160 A							
TITANIUM 321 AC/DC	400V 3~	32	5→320 (AC) 3→320 (DC)	5→320	■	■	0.1→20 000 Hz	■	■	■	■	■	320 A	80%	310 A	10→300	83	Ø13 70/95	24 kVA	81 x 38 x 58 / 33	72 x 30 x 56 / 30.5
TITANIUM 400 AC/DC	400V 3~	32	5→400 (AC) 3→400 (DC)	5→400	■	■	0.1→20 000 Hz	■	■	■	■	■	400 A	60%	360 A	20→300	85	Ø13 70/95	30 kVA	81 x 38 x 58 / 42.5	71 x 28 x 48 / 39.7



25

TITANIUM

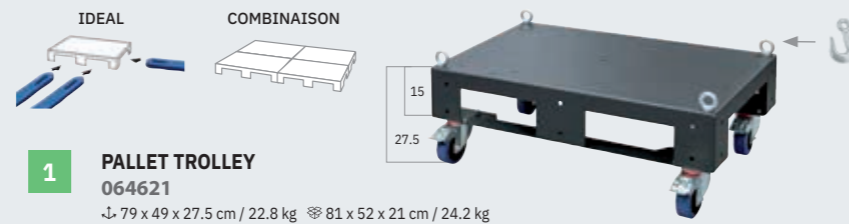
TIG AC/DC

COMPATIBILITY

TIG	KRYPTON 401 DC	1	3	6
	TITANIUM 230	2	5*	
	TITANIUM 321	1	3	6
	TITANIUM 400	1	4	5

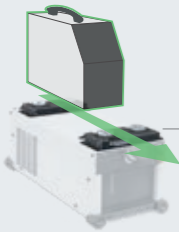
5* : + Kit NUM-1 necessary (063938)

TROLLEYS / CHARIOTS


1 PALLET TROLLEY
064621

↳ 79 x 49 x 27.5 cm / 22.8 kg ↳ 81 x 52 x 21 cm / 24.2 kg

COOLING UNITS / GROUPE FROIDS


2
KOOLWELD 1
070820
KOOLWELD 4
087293
OPTION
QUICK ASSEMBLY
for Titanium 230
076006

3
KOOLWELD 3
083363

4
WCU 1kW C
013537

OPTIONS

Cooling liquid
2L 082212
5L 062511
10L 052246Ø 10 (x1)
064331Ø 10 (x1)
064324Ø 6 (x1)
064348

	50 / 60 Hz		1L/min W	L	Output Front	Thermal protection Protection thermique	Water flow sensor Capteur débit d'eau	Water level sensor Capteur niveau d'eau	Noise reduce	L x W x H cm / kg	L x W x H cm / kg
	Quick connect										
KOOLWELD 1	24V DC	■	1000	3	■	■	■	■	■	65 x 36 x 32 / 18	62 x 26 x 2 / 16
KOOLWELD 4	24V DC	■	1000	3	■	■	■	■	■	65 x 36 x 32 / 17	62 x 26 x 23 / 15
KOOLWELD 3	400V / 2~	■	1000	5.5	■	■	■	■	■	80 x 36 x 35 / 20	72 x 30 x 24 / 18
WCU 1kW C	400V / 2~	■	1000	5.5	■	■	■	■	■	80 x 36 x 35 / 19	72 x 30 x 24 / 17

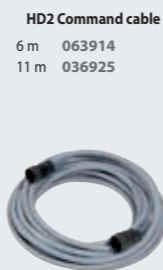
REMOTE CONTROL / COMMANDE À DISTANCE


5
RC-HD2
062122
↳ 1.8 kg
↳ 36 x 27 x 21 cm / 2.7 kg
for
✓ Titanium 230 AC/DC FV
✓ Titanium 400 AC/DC

SOFTWARE UPDATE



command cable not included

HD2 Command cable
6 m 063914
11 m 036925

OPTIONS

MAGNETFIX 50
029637
6
RC-HD3
079700
↳ 1.8 kg
↳ 35.5 x 28 x 21.5 cm / 2.9 kg
for
✓ Krypton 401 DC
✓ Titanium 321 AC/DC

SOFTWARE UPDATE



command cable not included

HD3 Command cable
2 m 079717
6 m 079724
10 m 079731

CONFIGURATION EXAMPLES



Access all of our configurations online
Accédez à toutes nos configurations en ligne





INVEST IN THE FUTURE

AUTOMATION

2026 A

GYS France

Headquarters

1 rue de la Croix des Landes
CS 54159
53941 Saint-Berthevin - Cedex
Laval - France
Tel +33 2 43 01 23 60
E-mail service.client@gys.fr



ZI, 134 bd des Loges
53941 Saint-Berthevin
Laval - France

Logistic center

2 Rue Jean Dausset
53810 Changé - France
Tel +33 2 43 01 54 33

GYS Germany

Professor-Wieler
Straße 11
52070 Aachen
Deutschland
Tel +49 241/189-23-710
Fax +49 241/189-23-719
E-mail aachen@gys.fr

GYS UK

Unit 3 - Great Central Way
Rugby - Warwickshire
CV21 3XH
United Kingdom
Tel +44 1926 338 609
Fax +44 1926 429 764
E-mail uk@gys.fr

GYS Italia

Via Porta Est, 7
30020 Marcon - VE
Italia
Tel +39 041 53 21 565
E-mail italia@gys.fr

GYS Ibérica

Avenida Pirineos 31
Nave 9
San Sebastian de los Reyes
28703 Madrid
España
Tel +34 917 409 790
E-mail iberica@gys.fr

GYS China

Lot N°15 - 6666 bd Songze
201706 Qingpu
Shanghai - China
Tel +86 6221 4461
Fax +86 5226 0067
www.gys-china.com.cn
E-mail
contact@gys-china.com.cn

LinkedIn
 Youtube
 WeChat
 Facebook
 Instagram



www.gys.fr

Distributed by



094963 • Document non contractuel. GYS se réserve le droit de modifier les spécifications et les tarifs de ses appareils, sans délai ni préavis, et en cas d'erreur typographique ou d'impression. • Non-contractual document. GYS reserves the right to modify the specifications and prices of its products without notice or delay, and in the event of typographical or printing errors. • Documento non contrattuale. GYS si riserva il diritto di modificare le specifiche e i prezzi dei suoi prodotti senza preavviso in caso di errori tipografici o di stampa. • Dieses Dokument ist nicht vertraglich bindend. GYS behält sich das Recht vor, Spezifikationen sowie Preise seiner Geräte jederzeit und ohne vorherige Ankündigung zu ändern. Dies gilt ebenso im Falle von Druck- oder Schreibfehlern. • I.P. - 132 g • printed in March 2026